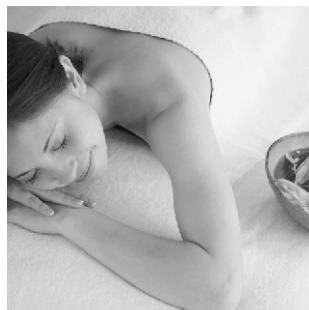
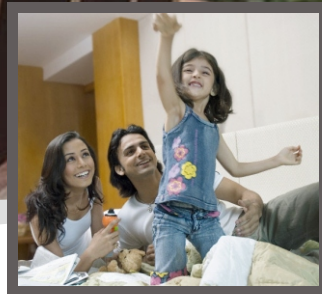


# *Pearl Paradise*



Experience Life at its Peak

# Escape from ordinary



Life Style



Comfort



Entertainment

**I**t is said that luxury is a state of mind. More than the materials that make up the product ; More than the label it wears ; & Certainly more than the price tag. The exquisite refinement of the physical environment is the most essential component of that state of mind. Pearl Paradise has managed to achieve that elusive formula. Creating that perfect combination of exclusivity and personalization that makes up a home.

Presenting Pearl Paradise. Not just sumptuous, but also well-planned, perfectly fitted, ergonomic design at its best; using form and dimension to make apartments feel open and expansive. Homes where luxury speaks to you from every corner through high-quality construction and craftsmanship, and materials with distinctive specifications that will endure forever.

**S**imple is the best - Meticulously designed, spacious and airy homes. All flats with excellent light and air ventilation with maximum internal usage area.

- Rain water harvesting
- Pollution free environment
- Project Approved by Agra Development Authority.
- Vastu Compliant layout
- Beautiful landscaping

The gentle colours of **green** outside,  
Cushioned comforts of interiors inside.



Single, secured and wide gated entry.

Intercom connectivity within each unit.

24 hrs water supply.

24 hrs. Power Backup.

Elevators in each block.

Integrated rain water harvesting system.

Modular Kitchen.

Two AC Unit in Each Apartment.

## *Enjoy Quality Family Time*

Peal Paradise offers you the best infrastructure for all round development of your children and relishing a quality life. Children would get to grow up better, facilitating the complete growth of their mind, body and soul.

Here, your loved ones would get a unique opportunity to live in a holistic and nature-friendly environment. While you get to spend quality time with them and really enjoy a better life.





Peal Paradise has been designed keeping in mind little things which make a big difference. These are the things which can convert a house into a home.

For starters we know that your family is the most important asset you own. So we ensure 24 hour security to keep you and your family safe. We know you want your kids to do well in school, so we'll ensure that there's 24 hour power

backup so that your child can learn computers when the entire neighborhood is reeling in a power cut.

We have ensured that your home is designed according to Vaastu, providing maximum utility to your family, has natural air and light to brighten your day and has quality things to match your taste.





# *Your dream home is not a dream anymore*

Pearl Paradise offers all the amenities for a healthy, peaceful and fun filled lifestyle. There is a fun filled environment for your child.

Your family can live the life of your dreams in your dream house.

## **Structure**

RCC framed structure fill within brick walls.

## **Common Area**

Lift Facade: Pattern cladding in granite and tiles.  
Staircases: Flooring in Indian Marble treads and risers with SS railings.

## **External Facade**

Weather-proof paint finish / stone / tile cladding up to certain height.

## **Woodwork**

All door and windows Chaukhats in Salwood.  
Decorative main entrance doors with door fittings.  
Flush doors with spirit polish/enamel paints.  
Glazed and mesh window doors with MS grills.  
Powder coated hardware fittings.  
Wardrobe in bedrooms and kitchen with mica finish doors.

## **Electrical**

Concealed copper wiring in PVC conduits.  
Modular switches, TV and Telephone wiring.

## **Power Backup**

24 hrs. Backup

## **Parking**

Reserved car parking for each flat.

## **Lifts**

Seperate lift in each block.

## **Security System**

Round the clock 24 hrs parameter security.  
Dedicated intercom linking the main gate and each residence.

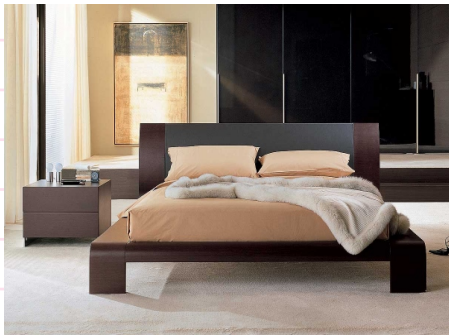






### Living and Dining

- Flooring of 2'x 2' vitrified tiles.
- False ceiling.
- Acrylic emulsion paint in pastel colours on walls and ceiling.
- Decorative main entrance doors with door fittings.
- All door and window Chaukhats in salwood.
- Flush doors with spirit polish/enamel paints.
- Air conditioning unit in the living room.
- Stylish lights, fans and electrical accessories.



### Bedrooms

- Flooring of 2'x 2' vitrified tiles.
- Pop work.
- Acrylic emulsion paint in pastel colours on walls and ceiling.
- Air conditioning unit in the master bedroom.
- Stylish lights, fans and electrical accessories.
- Wooden Wardrobes in 2 bedrooms.



### Kitchen

- Modular kitchen.
- Granite counter.
- Stainless steel sink.
- Ceramic tiles up to 2' ft. Height above counter.
- Flooring of 2'x 2' vitrified tiles.
- Acrylic emulsion paint.



### Bathrooms

- Anti-skid tiles flooring.
- Quality chinaware and CP fittings.
- Designer glazed ceramic tiles up to 7' ft. Height.
- Acrylic emulsion paint on the walls and ceiling.
- Geyser in the master bathroom.



### Balconies

- Anti-skid tiles flooring.
- Weather proof paint finish.
- Stylish decorative lights.

## The Final touch

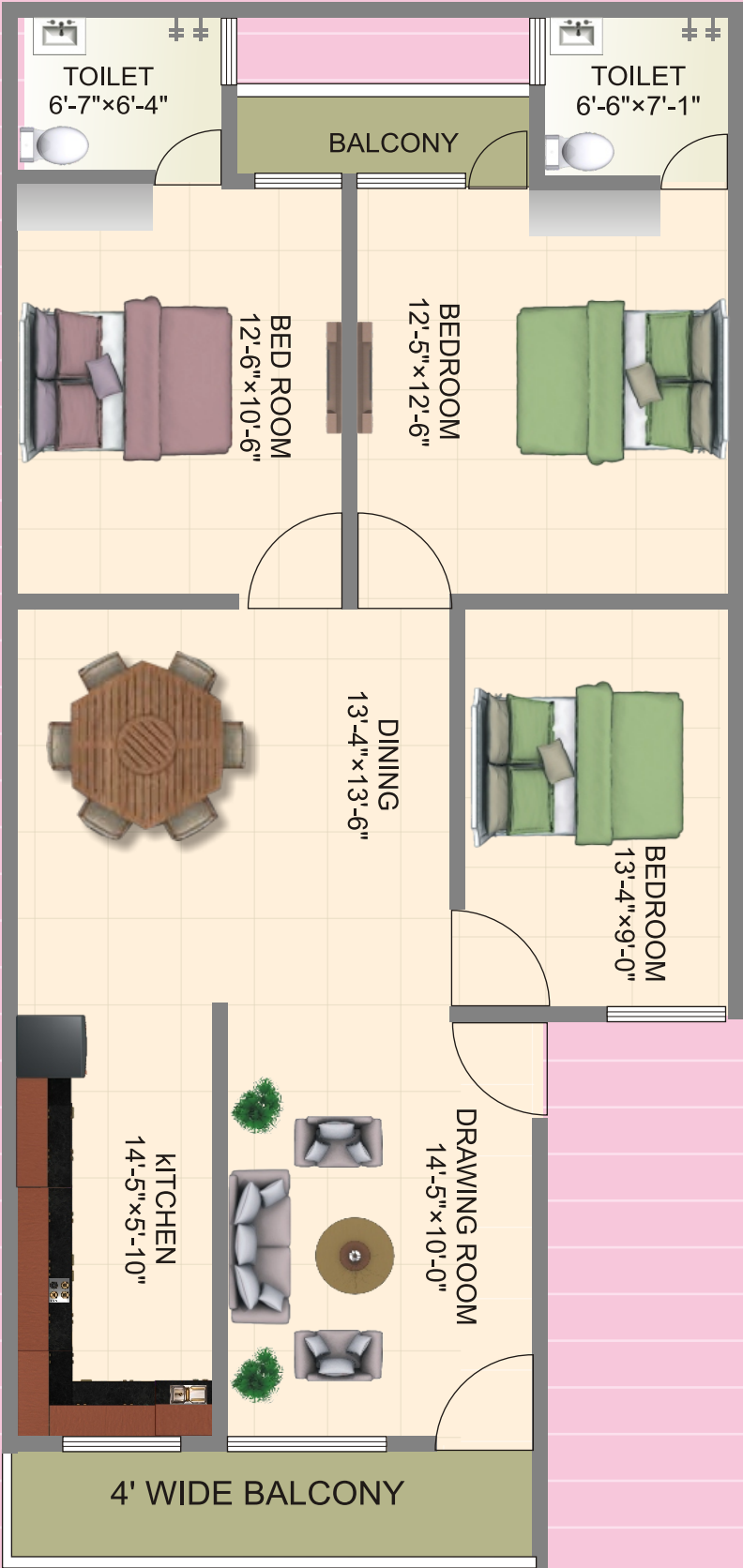
At Pearl Paradise we have used top quality materials to build every aspect of your home be it flooring, steel, woodwork, fittings, accessories and paints that color your walls all have gone through a very detailed process to ensure high quality. The classy finish lends your home an elegant look.



\*Optional Toilet

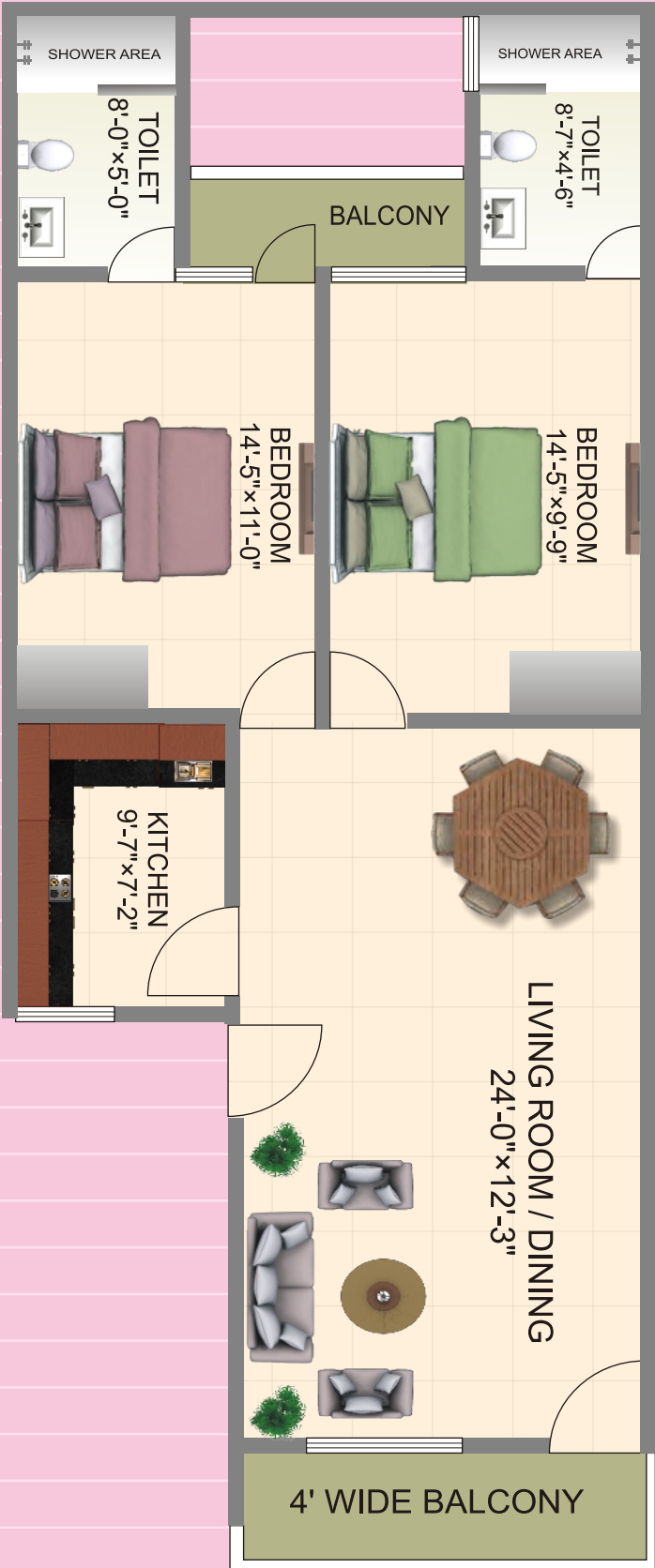


3 BHK Layout Plan



Super Buildup Area  
1500 sq. ft.

2 BHK Layout Plan



Super Buildup Area  
1300 sq. ft.





All the images used in this brochure are just for an dramatic representation.  
Any specification, layout & material can be changed by us without any prior notice.  
This brochure is not for legal offering.

Builders & Promoter :



**O P CHAINS HOUSINGS**

Registered Office : O P Chains Group, 2/27, Seth Gali, Agra U.P., INDIA; Ph. : +91-562-4009445

Business Office : O P Chains Housings, Opp. Shah Cinema, M.G. Road, Agra U.P., INDIA

Email : [info@opchainshousings.com](mailto:info@opchainshousings.com); Website : [www.opchainshousings.com](http://www.opchainshousings.com)

**Call for Booking : +91 99270 72000**

Architect :

